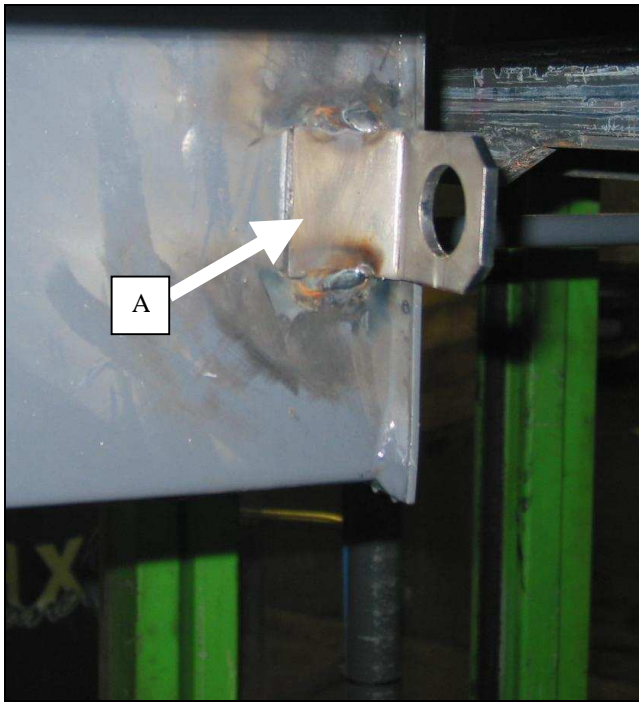


Installation of KS 35's Condenser

- Move Distribution Pipe under the Machine

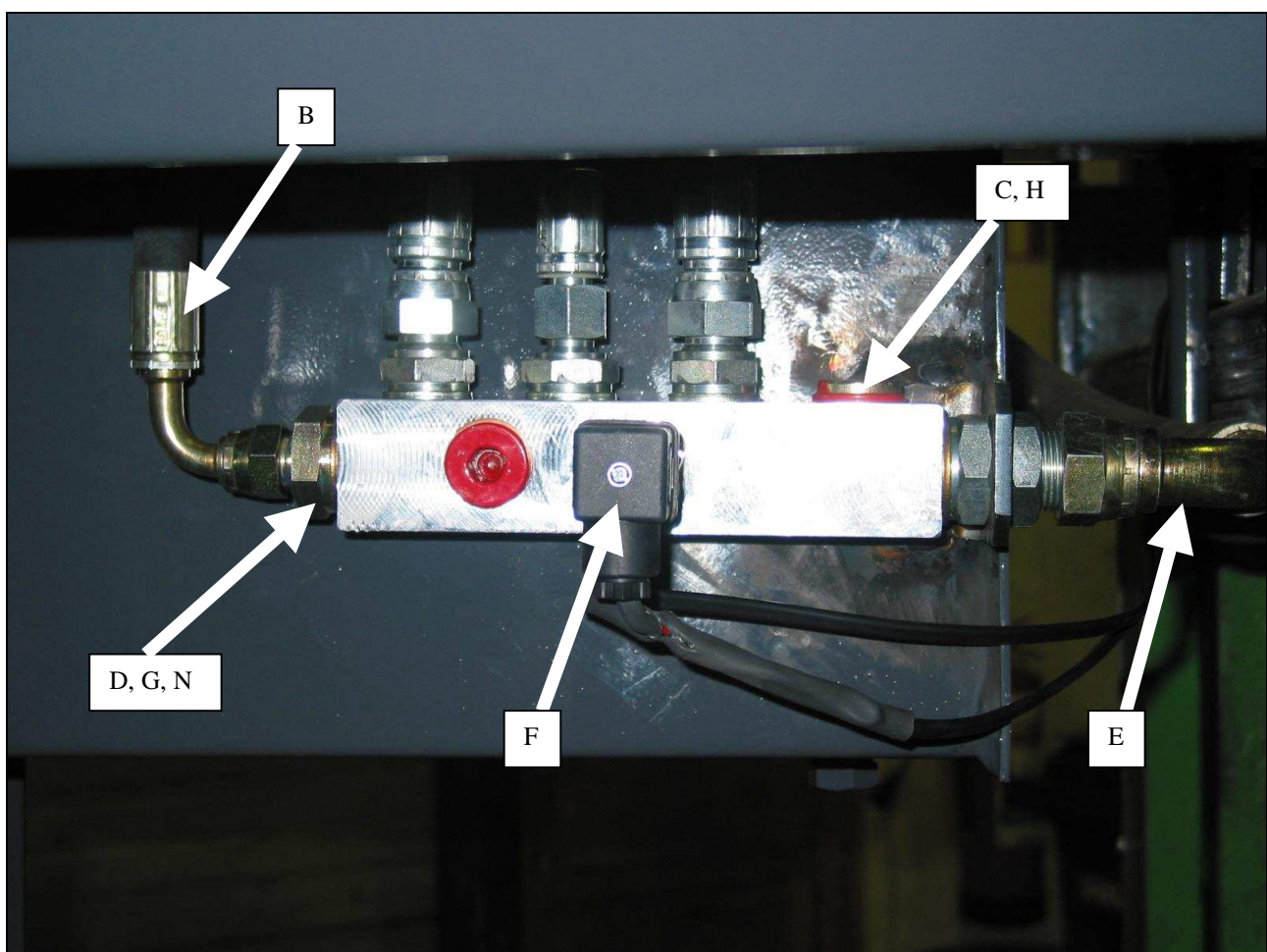


- Weld the Keeper A if needed.



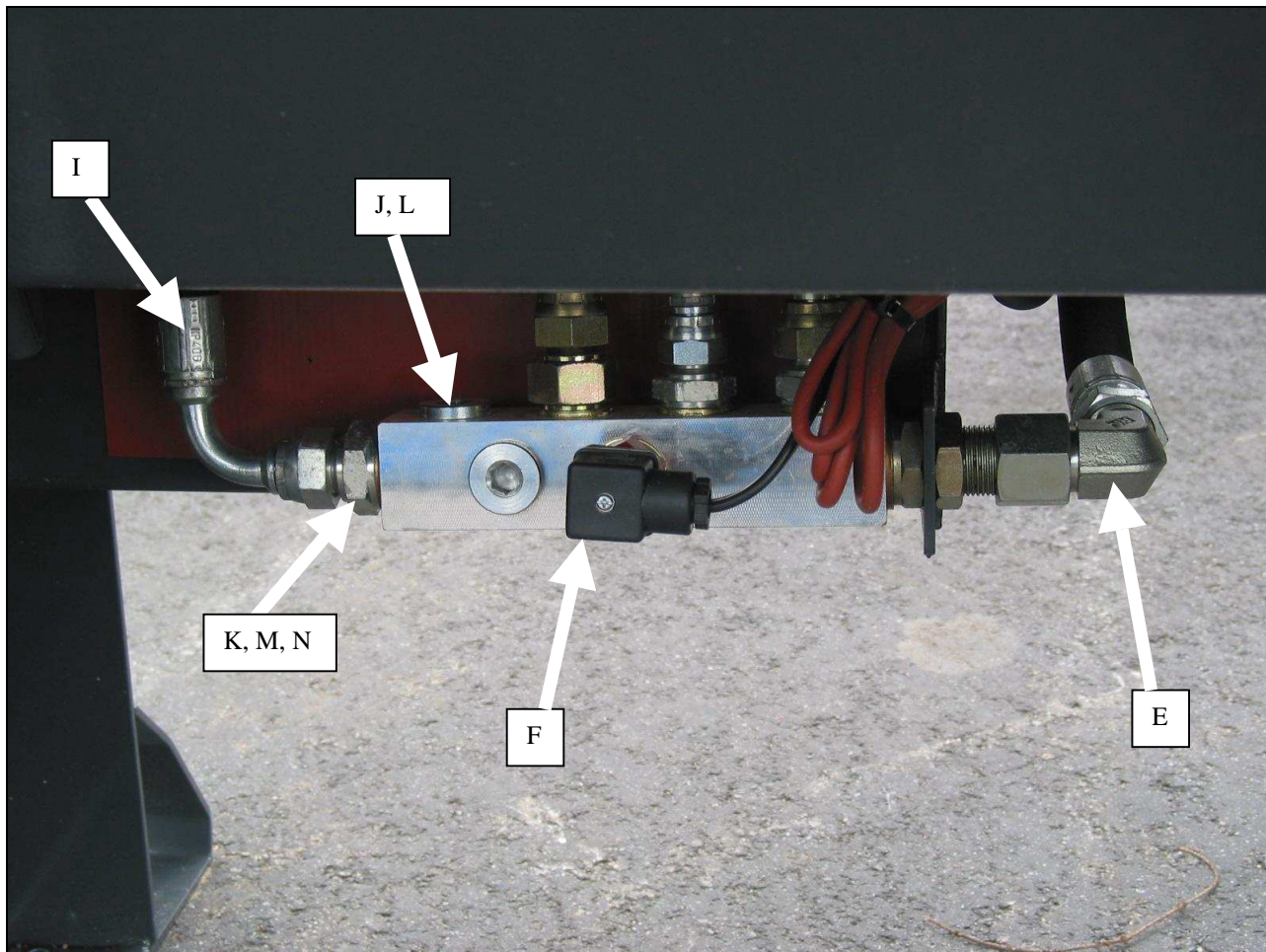
Distribution Pipe of KS 35 Basic Model

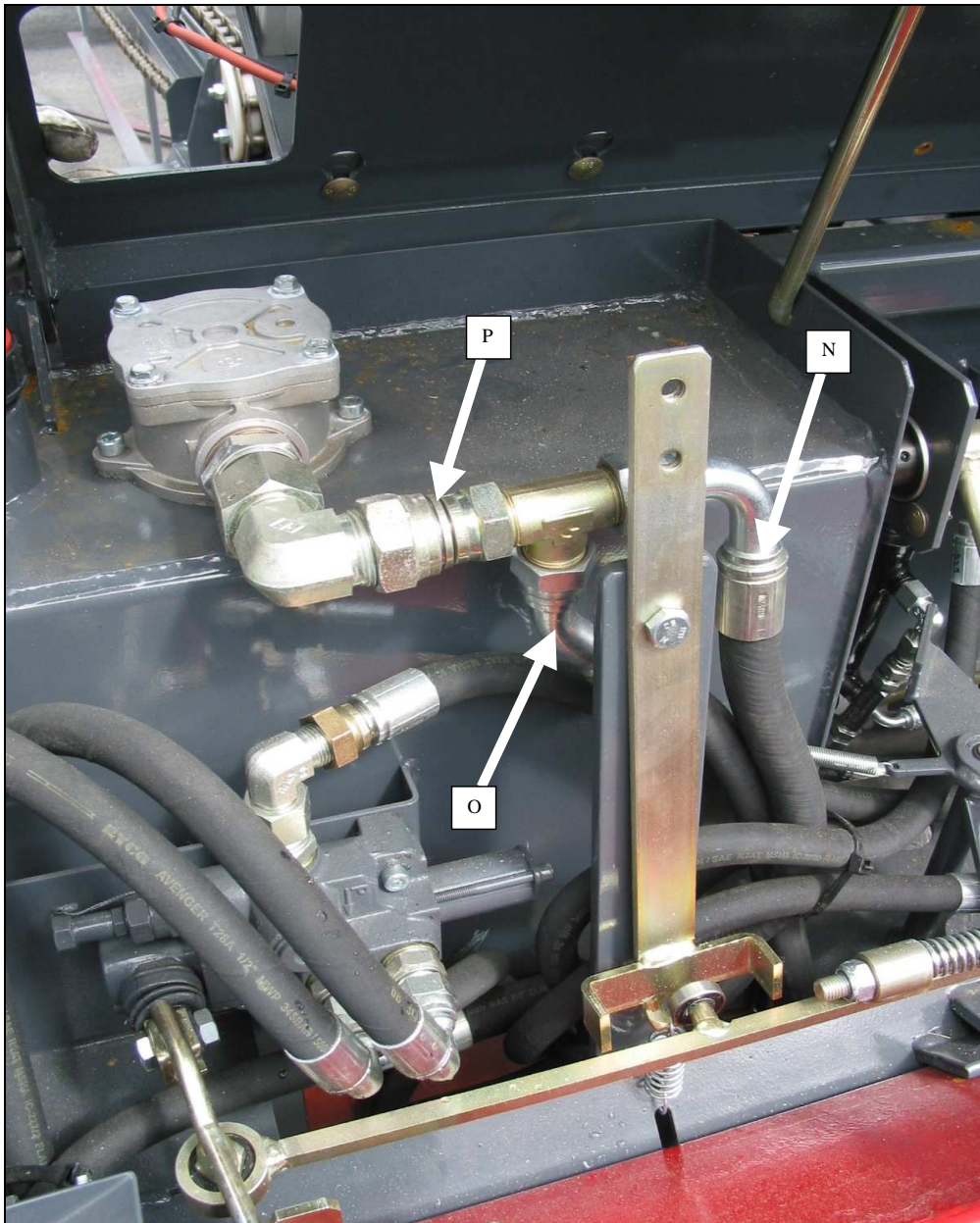
- Move tube **B** from location **C** → To location **D**.
- Plug up location **C**.
- Tube **E** attached to Condenser
- **F** Temperature sensor
- **G** Nipple R 3/8 /R 3/4".
- Plug R 1/2" **H**
- Tube **N** removed from here



Distribution Pipe of KS 35 S- Model

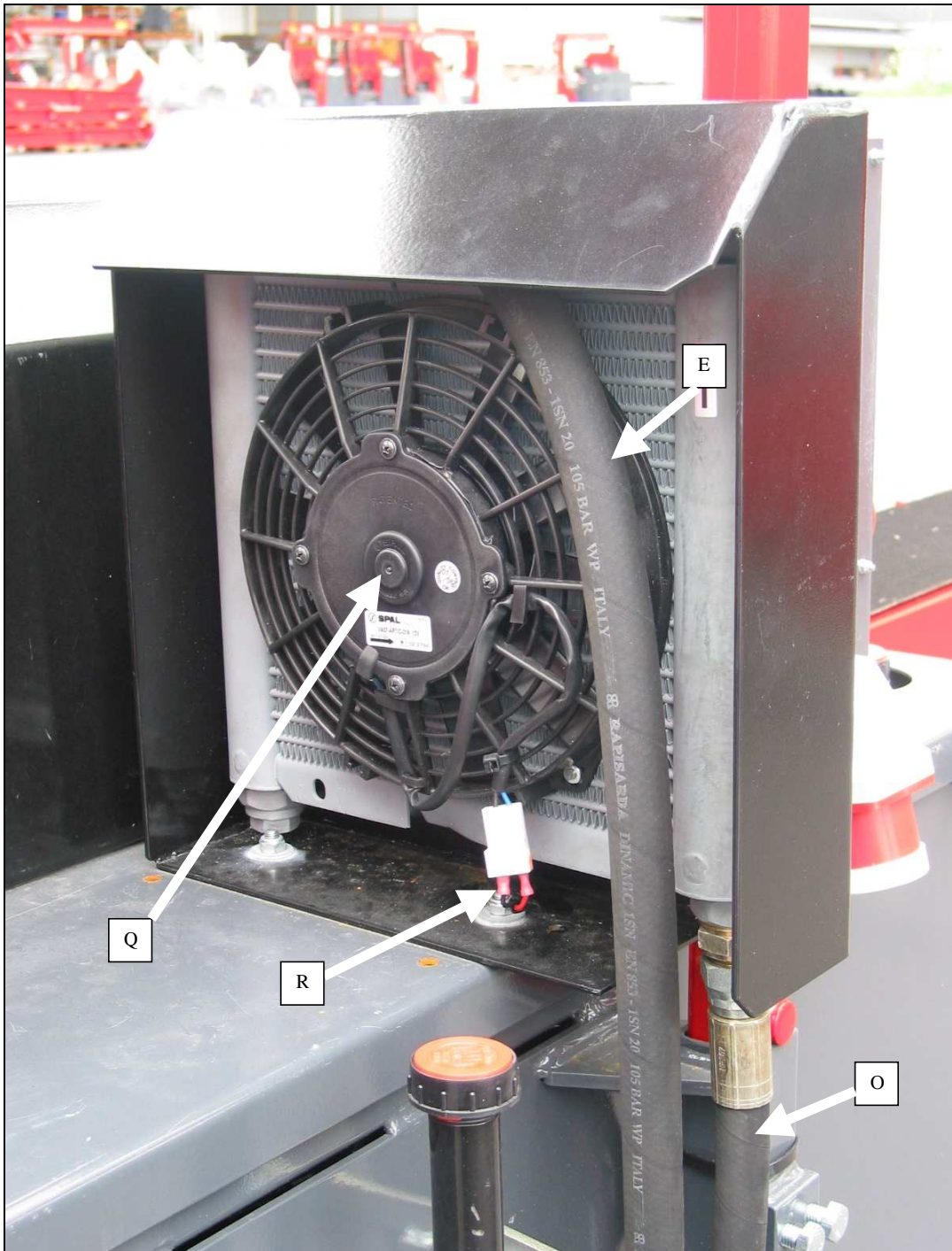
- E Tube attached to Condenser
- F Temperature Sensor .
- Move Tube I from location J to → location K.
- L Plug R ½"
- M Nipple R ½" / R ¾".
- Tube N removed from here





- Tube **N** removed from Distribution Pipe
- Tube **O** attached to Condenser
- **P** Extension Nipple R 1" / R ¾"

- E Tube attached to Distribution Pipe
- O Tube to T-Pipe
- Q Blower should suck up the Air
- R Rotating Motion can be changed by Wiring



- Attach Condenser to conveyor's support
- Condenser can be turned for maintenance

